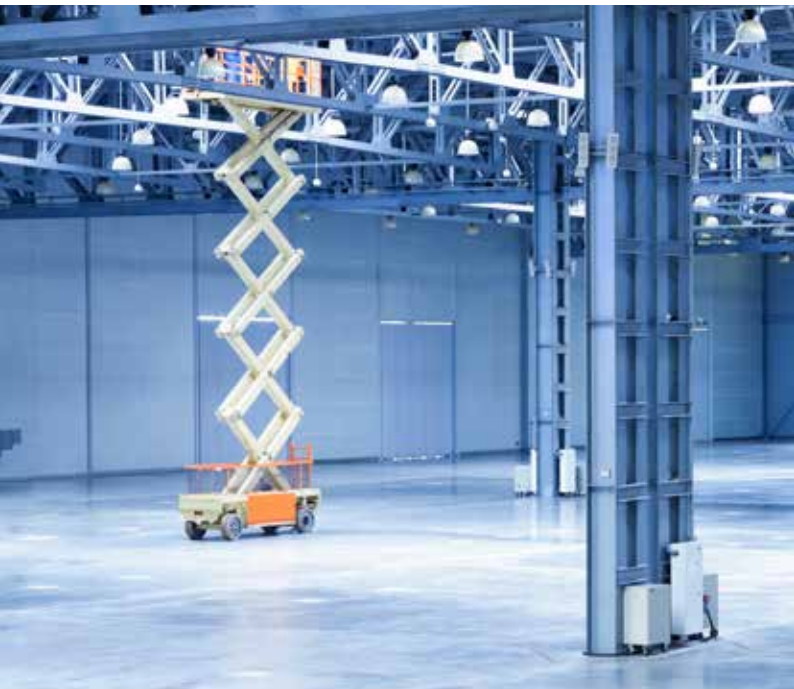


MOTIVE POWER



# QUASAR™ Flooded

Carbon Nano Bloc



# HIGH ENERGY ON DEMAND™

# QUASAR™ Carbon Nano Flooded Bloc - High Energy On Demand

**With an extensive product range available, Eternity Technologies prides itself on world-class product design, production processes, technical development, cost structure and global location.**

Eternity Technologies ongoing commitment to delivering industry leading product, at the cutting edge of product development delivers QUASAR Carbon Nano Flooded Bloc Battery.

QUASAR Carbon Nano Tube technology delivers greater charge acceptance and longer life versus conventional lead acid batteries.

Developed by Eternity Technologies, QUASAR utilises industry leading Carbon Nano Tube technology to deliver enhanced consistency of performance, improved charge acceptance and increased cycle life.



## Features...

- Compatible for deep cycle applications**
- Ultra energy efficient due to low resistance**
- Increased cycle life due to Carbon Nano Tube Technology**
- Suitable for opportunity charging**
- Cost savings due to increased efficiency**
- Up to 2 x faster recharge**
- Allows for opportunity charging to give you those extra running times when required**
- Suitable for extreme temperature variants**

## Applications:

- Suitable for all motive, leisure, solar & reserve power applications:**
- Golf carts, including electric vehicles**
- Access Work Platform (AWP)**
- Cleaning Machines**
- Maritime**
- Wheelchairs**
- Solar**
- Renewable Energy**
- Traffic Systems**
- Caravans / Motorhomes RV's**
- Home Inverter**

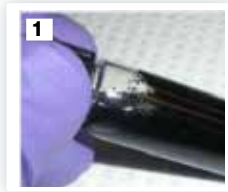
For I&O&M please visit [www.eternitytechnologies.com](http://www.eternitytechnologies.com)

## Charging profile

**IUI Charging**  $I_1 = \text{min. } 12\% C_5 \text{ max. } 40\% C_5$   
 $U = 2.45 \text{ V per cell}$   
 $I_2 = 6\% C_5 \text{ for max. } 4 \text{ hours}$

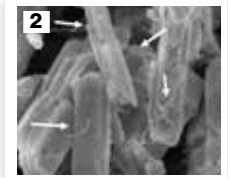
**Compliant with** IEC 60254-1 & IEC 60254-2





## 1. Fluid

Eternity Technologies uses patented Carbon Nano Tube Fluid Liquid in a specific battery pasting process.



## 2. Nanotubes

It creates a network of individual nanotubes allowing for electrons to flow with minimal resistance, as well as reinforcing the plates, adding lasting strength and durability.

### Resulting in:

- Enhanced consistency of performance
- Improved charge acceptance
- Increased cycle life
- Opportunity charging capabilities
- Improved Thermal Operational Ranges

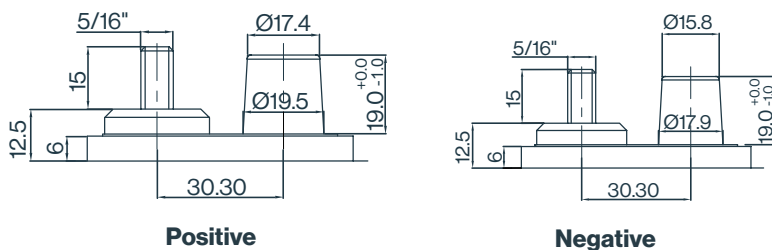
## Bloc Specifications...

Type	Group Type	Voltage	Capacity Minutes			Capacity Ah		Length (mm)	Width (mm)	Height (C) (mm)	Height (D) (mm)	Weight (kg)	Weight (lb)	Terminal
			25Amps	56Amps	75Amps	Ah C <sub>5</sub>	Ah C <sub>20</sub>							
QSRF 105	GC2	6	454	-	116	185	225	260	180	247	277	28	61.7	UTL/DUAL
QSRF 125	GC2	6	495	-	134	195	240	260	180	247	277	30	66.1	UTL/DUAL
QSRF 305	J305	6	722	-	198	270	315	308	174	339	365	40.5	89.3	DUAL
QSRF 305 HC	J305	6	793	-	218	295	350	308	174	339	365	44	97.0	DUAL
QSRF L16	L16	6	803	-	204	320	390	308	174	388	416	48	105.8	DUAL
QSRF L16 HC	L16	6	865	-	224	345	420	308	174	388	416	50	110.2	DUAL
QSRF 875	GC8	8	294	116	-	145	170	260	180	247	277	29	63.9	UTL/DUAL
QSRF 890	GC8	8	344	133	-	155	190	260	180	247	277	31	69.0	UTL/DUAL
QSRF 1275	GC12	12	279	101	67	120	150	329	181	244	274	39	85.9	UTL/DUAL

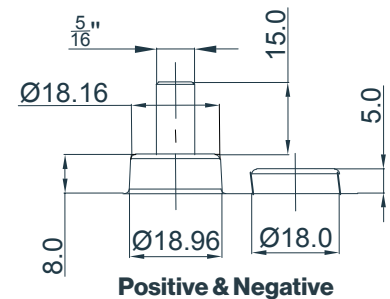
± 5% weight tolerance

### Terminal Options Available:

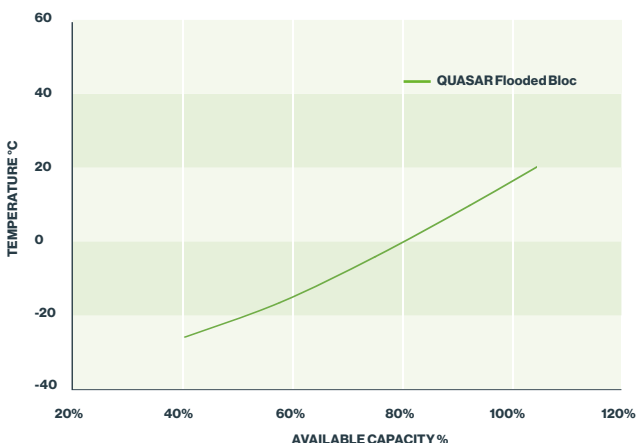
#### Dual



#### UTL



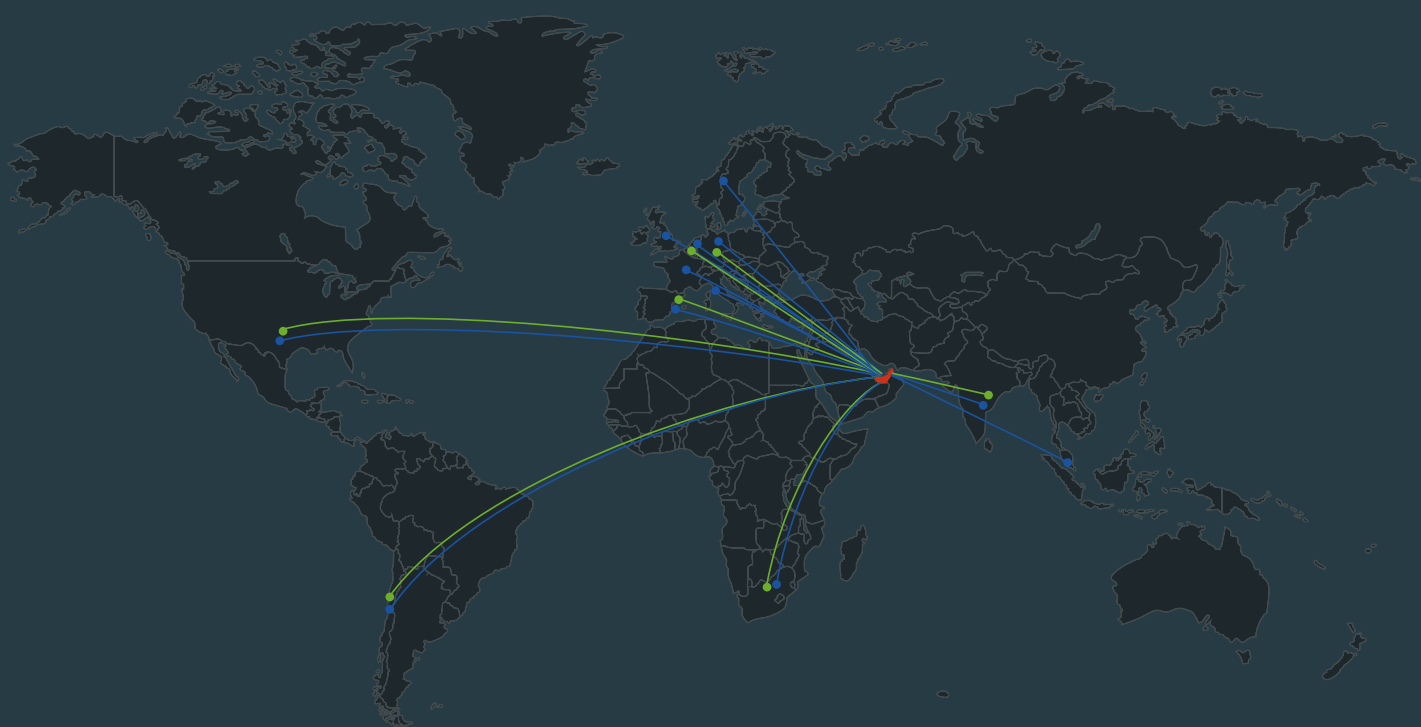
### Capacity vs Temperature



UTL

Dual

**A global leader in the industrial battery market providing world-class products for Motive Power and Reserve Power applications.**



**Eternity Technologies FZ-LLC**

Al Jazeera / Al Hamra, PO Box 35102,  
Ras Al Khaimah, UAE

**Sales & service**

[info@eternitytechnologies.com](mailto:info@eternitytechnologies.com)

[www.eternitytechnologies.com](http://www.eternitytechnologies.com)

